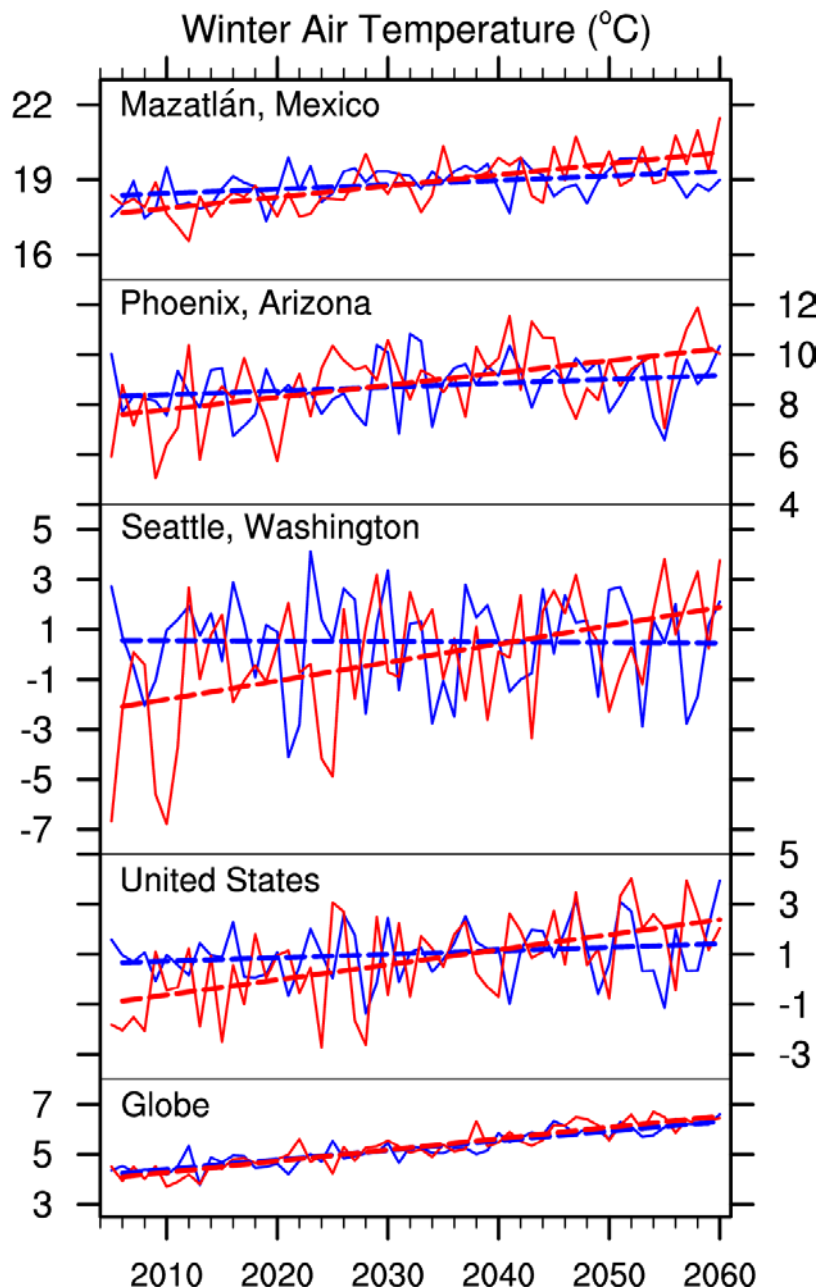
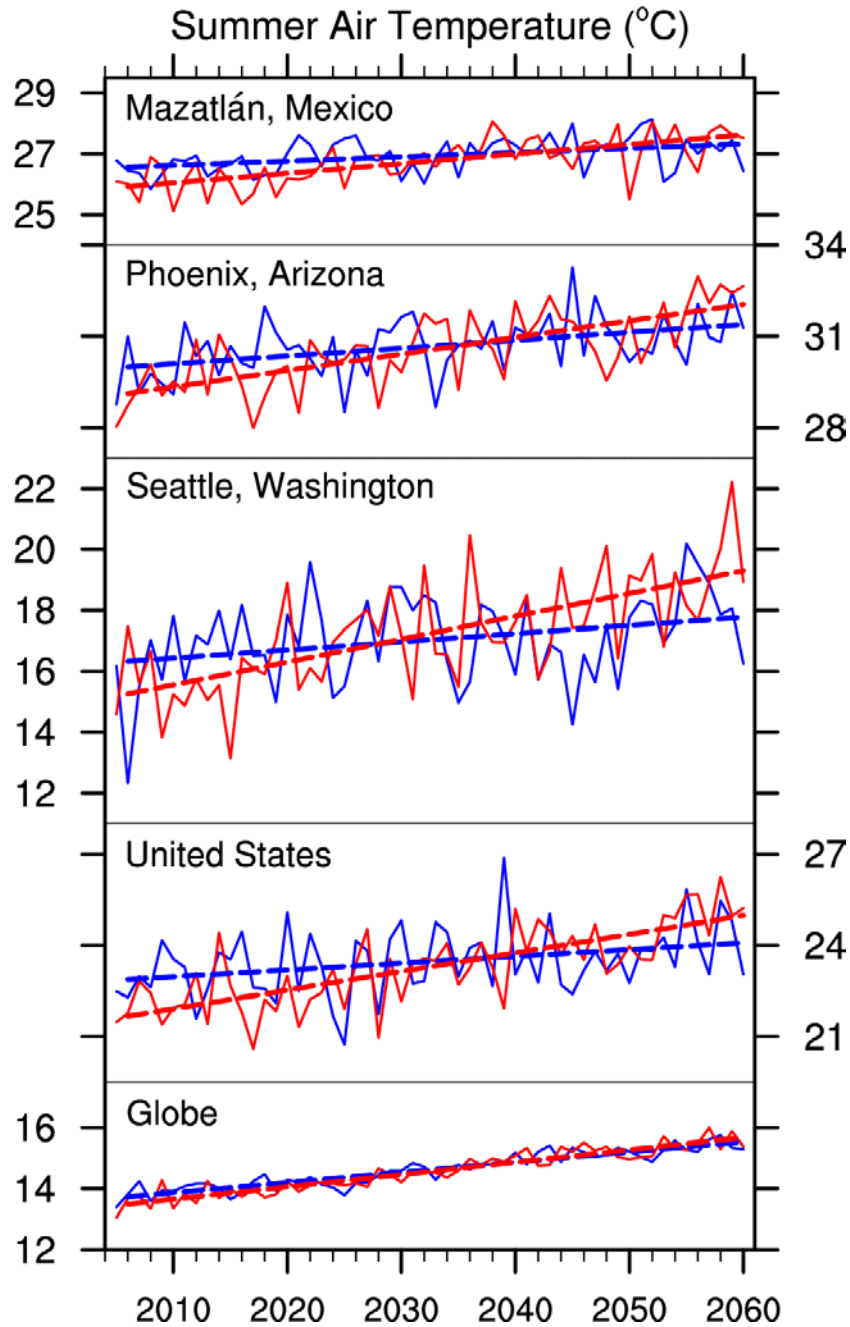


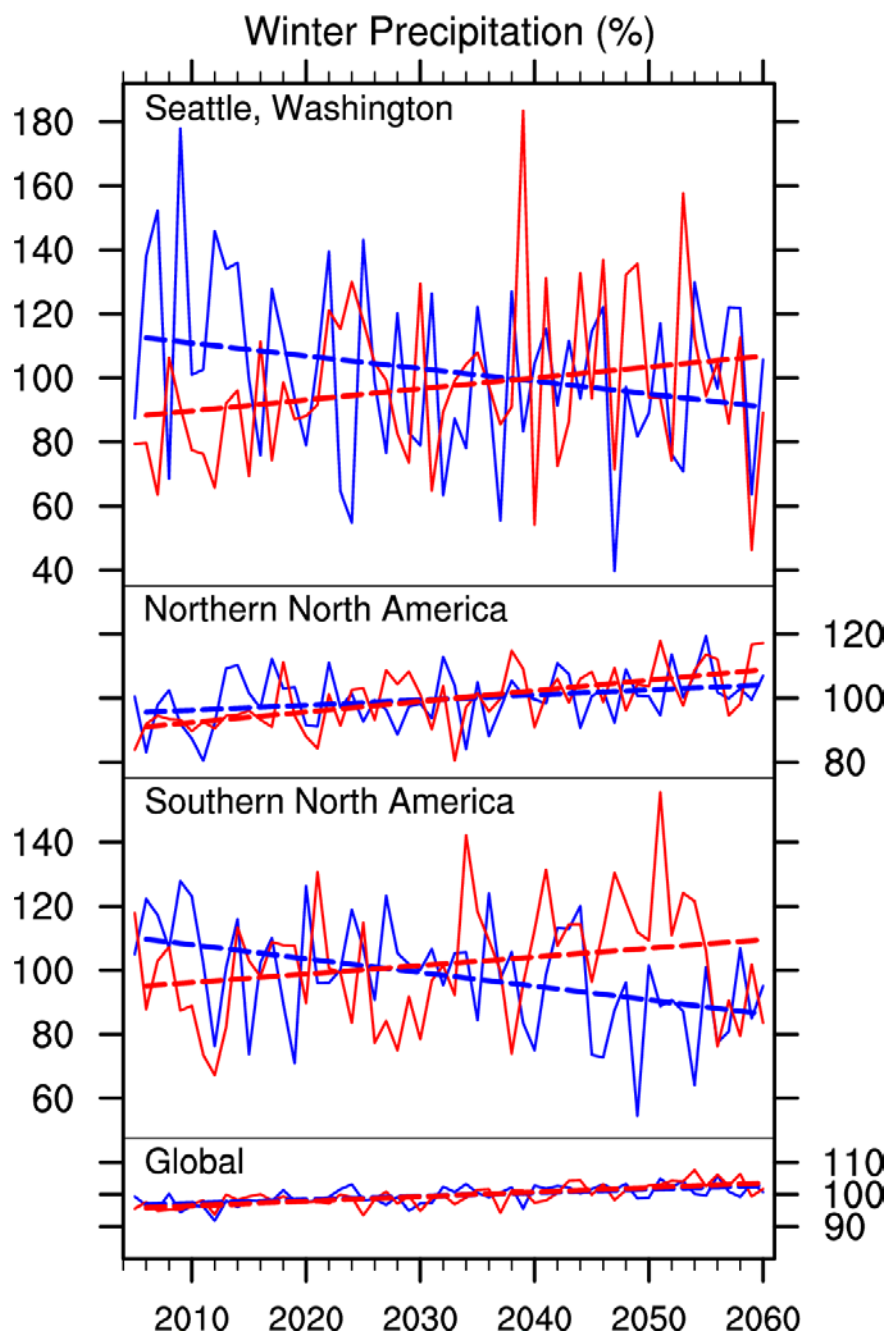
Communication of the role of natural variability in future North American climate



Supplementary Figure 1. As in Figure 1b in the main text (December-January-February), but without any adjustments to the model projections (note also that the long-term means have not been removed). Red and blue curves show model projections for 2005 through 2060 from the realizations with the largest and smallest future trends, respectively, for each location or region. Dashed red and blue lines show the best-fit linear trends to the red and blue curves, respectively. Note that the ensemble members with the largest warming trends (red curves) generally begin with cooler conditions and thus show only slightly higher values at the end of the simulation compared to those with the smallest warming trends (blue curves).



Supplementary Figure 2. As in Supplementary Figure 1 but for June-July-August.



Supplementary Figure 3. As in Supplementary Figure 1 but for precipitation (December-January-February) expressed as a percentage of the average value of the 40 model projections during 2005-2060.